



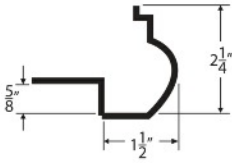
**COUNTERFORM**  
 CONCRETE COUNTERTOP SOLUTIONS  
 www.concretecountertopsolutions.com

**CS Con-Spec Industries Ltd.**

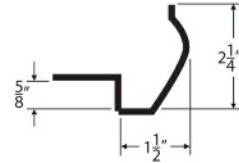
9525 - 63 Avenue, Edmonton, Alberta T6E 0G2  
 Ph: (780) 437-6136 Fax: (780) 437-6136 Toll Free (800) 295-5569  
 www.conspecindustries.com

**Cast-in-Place Form Profiles**

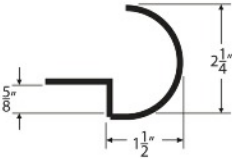
Edge form packages contain eight 7.5' sections of edge form (60 lin feet) and eight 7.5' sections of back wall form (60 lin feet).  
 Z-Forms provide a countertop 1½" thick, Euroforms are 7/8" thick.



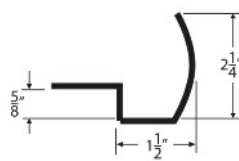
**Double Fancy**



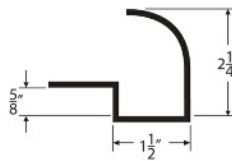
**Fancy**



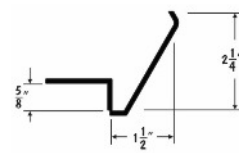
**Full Bullnose**



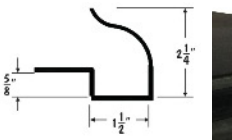
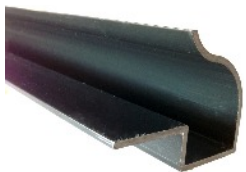
**Half Bullnose**



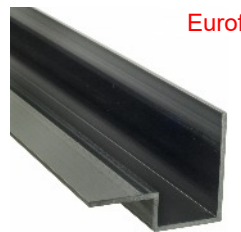
**Quarter Bullnose**



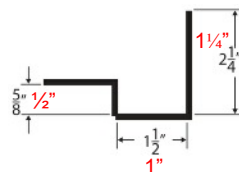
**Modern**



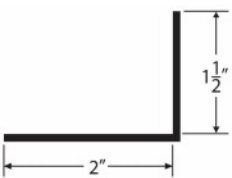
**Ogee**



Euroform dimensions in red

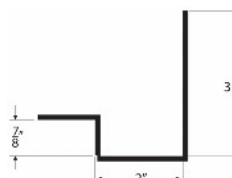


**Square Edge**



**Pre-Cast**

96 Lineal Feet of reusable forms. Used to create 1.5" or 2" thick countertops. Can be screwed down or held with two way Polyester Mounting Tape.



**Commercial Square Edge**

64 Lineal feet of countertop form that is meant for heavy duty commercial bar tops and islands. This form gives you the appearance of a 3-1/2" thick top. There is no backwall forms included.



**Back Wall Form**

Included in all form packages except for Pre-Cast and Commercial Square Edge.



### Sink Form

8 Foot self-adhering flexible sink form. Will conform to most undermount sinks . \*\*Sink must have vertical walls. For tight radius corners, sink form can be heated with a blow dryer or heat gun to soften the plastic so it bends easier. If using a zero radius sink, sink form will have to be cut into 4 pieces (one for each side of the sink).\*\*

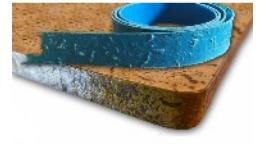
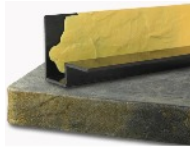


### Bendable Square Edge

A standard 8' long square edge form that is factory cut to accommodate a radius as tight as 6". Use electrical tape in the bottom of forms to seal up holes after the form has been attached. Ideal for making a radius edge.

### Form Liners

Reusable, 8 foot form liner. 2-1/4" made to fit perfectly inside of Z-Counterform Square Edge Form (Will also work in the Half Bullnose Form . Use Polyester mounting tape to hold form liner to this form.)



### Slate

Will give your countertop edge the appearance of slate. Ends are tapered to allow overlapping.

### Stone

Will give your countertop a chiseled stone edge look. Ends are tapered to allow overlapping.

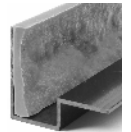
### Travertine

Will give your countertop edge the appearance of porous travertine. Ends are tapered to allow overlapping.



### Heavy Chisel

Reusable, 8 foot concrete form liner. 2-1/4" tall made to fit perfectly inside of Z-Counterform Square Edge Form. Gives a realistic, rustic slate edge to your counter.



### Rock Face & Rock Face Commercial

Reusable, 8 foot concrete form liner. 2-1/4" tall made to fit perfectly inside of Z-Counterform Square Edge Form. Rock Face Commercial are 3-1/2" tall made to fit perfectly inside of Z-Counterform Commercial Square Form. Gives a realistic, rustic edge to your counter.



### Edge Expert

Includes inside and outside corner, cutting guides. Edge Experts hold all edge profiles firmly in the correct position while mitering. (Will not work with commercial forms).

### Z-Clips



Z Clips are used to hold FG50 alkali resistant fibre glass reinforcing securely at the appropriate height for cast-in-place concrete countertops using Z Counterforms. They should be fastened with a #12x3/4" panhead screw. Any unused legs can be snapped off from the base. A box of 100 will cover approximately 33 ft<sup>2</sup>.

### Faucet Knockouts

One reusable silicone faucet knockout that will create a 1-1/4" hole which will work with most standard faucets. It will also create a 2-1/2" pocket that is 1" beneath the surface to fasten hardware in. This will accept most faucets and spouts. Must be used with 1/2" substrate and our standard 2-1/4" forms.



Holds mesh 1" high



Holds mesh 1/2" high



Holds mesh 1.75" high and/or 1" high

Standard- For use with all forms except thicker Commercial Forms and thinner EuroForms. All legs same height, no need to remove taller legs.

EuroForm - For use with thinner EuroForms. All legs same height, no need to remove taller legs.

Commercial - For use with thicker Commercial Forms. One set of taller legs and one set of shorter legs to install two rows of mesh if desired.



# COUNTERTOP FORM LINERS

Butterfield Cut Stone Form Liner 8' X 2 1/4"



BST9100

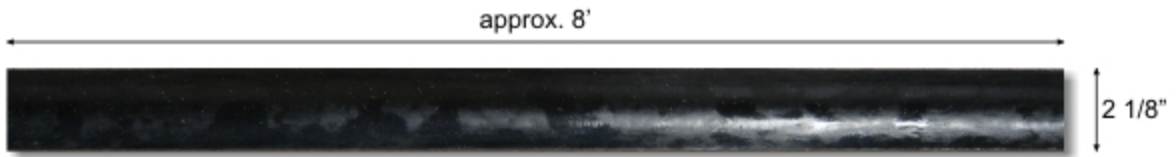


Outside Corner 90°  
BST9107



Inside Corner 90°  
BST9108

Butterfield Bull Nose Form Liner 8' X 2 1/8"



BST9120



Outside Corner 90°  
BST9121



Inside Corner 90°  
BST9123



Sweeping Outside Corner  
BST9122



Sweeping Inside Corner  
BST9124

Seller warrants that the product described on the face hereof has been manufactured of selected raw materials by skilled technicians. Neither seller nor manufacturer shall be responsible for any claims resulting from the failure to utilize the product in the manner in which it was intended and in accordance with instructions provided for use of product. The only obligation of either the seller or manufacturer shall be to replace any quantity of this product which proved to be defective. Neither seller nor manufacture assumes any liability, loss, or damage resulting from use of this product.