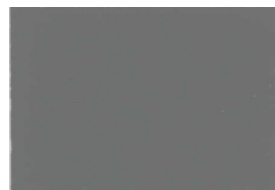


Perma-Cast Antiquing Release is dusted over the surface of freshly coloured concrete flatwork before using a pattern stamping tool. The release agent prevents the tool from sticking to the newly coloured, freshly stamped concrete. As the tool is stamped/impressed into the concrete, the coloured release powder is pressed in the textured surfaces of the concrete.

Upon washing and sealing, the difference in colour between the underlying concrete and the release, creates a visually attractive, antiqued look to the concrete. The added colour gives the appearance of depth.

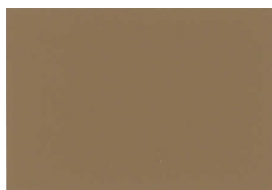
The amount of release agent imparted will vary with job site conditions. The final result will range between the colour of the base concrete and that of the antiquing release. The surface must be sealed and maintained to preserve its antiqued appearance over time.



R12 Storm Gray



R26 Cape Cod Gray



R25 Colina Tan



R22 Arena Buff



R19 Russet