



# DEX-COAT<sup>®</sup>

Preserves, Protects & Waterproofs  
Concrete, Wood, Masonry,  
Metal, Asphalt, Magnesite  
and Roofing materials.

- Elastomeric • Decorative
- Smooth and Textured • Deck coating

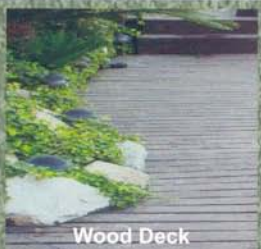
Dries in 30 Minutes    Easy to Use, Water Base    Interior & Exterior



**ROLL ON, SPRAY ON, BRUSH ON**

Ideal for industrial and residential use, such as:

- Steps
- Stairs
- Patios
- Porches
- Balconies
- Walkways
- Pool Decks
- Dock Areas
- Boat Docks
- Tennis Courts
- Shower Rooms



Wood Deck



Pool Decks

MONOCHEM

# DEX-COAT<sup>®</sup>

TECHNICAL BULLETIN



MADE IN U.S.A.

SMOOTH & NON-SKID DECK COATING

## PRODUCT DESCRIPTION:

ITEM NO. 2600, 2700, 2800, 2900

MONOCHEM DEX-COAT is a water-based, acrylic deck coating that forms a tough finish for all exterior/interior floor surfaces. It can be applied to latex painted or unpainted concrete, cement, wood, masonry, metal, and asphalt. DEX-COAT has outstanding durability and its abrasive-resistance quality assures excellent wear even in heavy traffic areas. It is highly resistant to alkali, acid, UV exposure and moisture. When cured, DEX-COAT will remain elastic and will contract and expand with temperature and weather variances.

### BASIC USES - For porous substrates only

Ideal for residential or industrial applications: swimming pool areas, porches, patios, walkways, basketball courts, tennis courts, and concrete walls.

### PACKAGING:

DEX-COAT is available in either smooth or textured, clear base or white base, and can be tinted to any color using Universal Colorants.

- Item No. 2600: Smooth White Base - Short-Fill: 8 OZ/Gal
- Item No. 2700: Textured White Base - Short-Fill: 8 OZ/Gal
- Item No. 2800: Textured Clear Base - Short-Fill: 12 OZ/Gal
- Item No. 2900: Smooth Clear Base - Short-Fill: 12 OZ/Gal

### PREPARATION:

Surface preparation is critical to product performance.

The surface to be coated must be dry and clean, free from all dirt, dust, oil, grease, wax and any loose materials or contaminants.

### WOOD SURFACES:

Wood surfaces should be sanded to a rough finish to provide "tooth" for the coating. We recommend sealing all sides of the wood to prevent moisture penetration. The moisture content of the wood should be 13% or lower.

*Disclaimer:* Wood decks or dimensional lumber built with gaps between planks should be taped and caulked. This protects against water penetrating behind the coating, which creates hydrostatic pressure. DEX-COAT will not stop tannin acid or bleeding from wood. Tannin acid is commonly found in pine, redwood, and cedar. For application over woods that contain tannin acid, we recommend applying MONOCHEM AQUAPRIME as a stain blocker/primer before applying DEX-COAT.

### UNPAINTED METAL SURFACES:

Remove oil or soap film with a neutral detergent. Metal surfaces should be abraded to provide a "tooth," which promotes the adhesion of the DEX-COAT. Remove rust and contaminants by lightly blasting with fine abrasives or conduct a light etching using MONOCHEM METAL ETCH. Then thoroughly rinse with water to ensure that all acids have been cleaned from the surface.

For small projects, sand metal surfaces with 60-80 grit sand paper or rough Scotch-Brite pads. Clean with a power washer to remove sanded or sandblasted residue.

To minimize rust formation in areas where rust has previously formed, we recommend applying a rust inhibitive metal primer within 6 hours after preparing the surface.

### PREVIOUSLY PAINTED CONCRETE SURFACES:

The composition of the existing coating should be determined prior to application.

LATEX BASED PAINT: Remove all loose, peeling or poorly bonded paint. Surfaces must be mechanically cleaned and abraded, using 60-80 grit sandpaper. Dull glossy surfaces by sanding or by using a chemical deglosser. Clean surfaces by using MONOCHEM CLEAN POWER or by scrub washing with a solution of 1/2 cup TSP to one gallon of warm water. Pay special attention to areas where build-ups of dirt, grease and oil exist. These areas should be scrubbed clean.

Apply one coat of MONOCHEM ULTRA-PRIME Polyurethane Primer or MONOCHEM 1 Epoxy Primer. For more information, follow product data and label instructions.

### TECHNICAL DATA:

|                  |             |
|------------------|-------------|
| Composition..... | Acrylic     |
| Finish.....      | Low Gloss   |
| Viscosity.....   | .85-90 KU's |
| VOC Level.....   | <50 g/l     |

### WEIGHT PER GALLON

|                       |          |
|-----------------------|----------|
| 2600-Smooth WB.....   | 9.5 Lbs  |
| 2700-Textured WB..... | 11 Lbs   |
| 2800-Textured CB..... | 10.5 Lbs |
| 2900-Smooth CB.....   | 9 Lbs    |

### SOLIDS BY WEIGHT

|  |        |
|--|--------|
| Solids by weight Smooth Pigmented..... | 38% ±2 |
| Solids by weight Textured.....         | 56-60% |

|                          |           |
|--------------------------|-----------|
| Moisture Vapor.....      | Excellent |
| Water Resistance.....    | Excellent |
| Solvent Resistance.....  | Excellent |
| Alkali Resistance.....   | Excellent |
| Abrasion Resistance..... | Excellent |

Meets Federal Specification TT-C-0555A  
Section 333 for water permeability and ASTM E-95  
Method A for water vapor permeability.

### - Factor of friction (Non-slip Properties)

#### Per ASTM C1028

|                     |     |            |     |
|---------------------|-----|------------|-----|
| Leather (wet).....  | 45% | (dry)..... | 59% |
| Rubber (wet).....   | 65% | (dry)..... | 76% |
| Concrete (wet)..... | 85% | (dry)..... | 94% |

### - Coefficient of expansion

(20°F. to 100°F.).....Average 8.1 X 10<sup>-6</sup>

OIL BASED PAINT: Remove all existing oil based coatings by sandblasting, shot blasting, or bead blasting. This includes all chlorinated rubber and solvent based finishes such as oil based enamels, epoxies, urethanes, etc.

Apply one coat of MONOCHEM 21 Epoxy Primer. For more information, follow product data and label instructions.

### BARE CONCRETE SURFACES:

Bare concrete surfaces must be fully cured, porous, structurally sound, and free from rock pockets, voids and cracks. Dense (non-porous concrete\*) should be sandblasted, shot blasted, or acid etched for proper penetration and adhesion.

\*Refer to ABSORPTION TEST

To ensure proper adhesion, acid etch bare concrete floors. Dense concrete requires 2-3 acid etchings. A properly etched floor feels like 120-grit sandpaper.

### ETCHING INSTRUCTIONS:

Before preparing an acid solution, read all cautions and warnings on the acid packaging. Wear appropriate protective clothing, goggles, and rubber gloves.

*Acid Solution Option 1:* In a plastic bucket, add one pound of MONOCHEM MONO-CLEAN to one gallon of warm water.

*Acid Solution Option 2:* In a plastic bucket, add one part muriatic acid to four parts of water.

Flush the concrete floor with the acid solution for 30 minutes (or when acid solution stops bubbling). Flood areas with large amounts of fresh water and scrub surface

9

HIGH PERFORMANCE COATING 09960  
PROTECTIVE COATINGS

MONOPOLE INC.  
UPDATED SEPTEMBER 2008



Manufacturer of  
U.S. SPECIALTY COATINGS

4661 Alger Street • Los Angeles, CA 90039

Tel: 818-500-8585 • Fax: 818-502-0818

www.monopoleinc.com • Email: info@monopoleinc.com

with a stiff broom to remove all the powdery residue. Rinse thoroughly to eliminate all powdery residues and allow to dry.  
Note: Hard and glossy or alkaline concrete will require stronger acid solutions and/or a double etching.

Neutralize the acid by scrubbing the surface with ammonia and water (one pint of ammonia to four gallons of water).

Allow the surface to dry thoroughly. The moisture content should be below 15%. Apply **DEX-COAT** according to the technical bulletin & label directions.

**NOTE:** ALWAYS apply a test patch to check adhesion, compatibility and proper results. Responsibility for determining the adhesion of **DEX-COAT** to an existing finish rests with the applicator. Application of **DEX-COAT** over existing and poorly adhering painted surfaces may result in the eventual lifting of the old paint.

#### APPLICATION PRECAUTIONS:

For best results, all materials are recommended to be used when the temperature is between 50°F and 85°F.

It is recommended to keep the surface of the steel trowel damp with water while knocking down the splattered texture.

When the temperature is greater than 85°F, knocking down the splattered texture will be required within 3-5 minutes.

#### APPLICATION & COVERAGE:

Box and mix all containers to ensure a consistent color.

For applications on elevated (second story) decks, we recommend the use of **MONOCHEM 300** waterproofing membrane prior to applying **DEX-COAT**.

Use a paint brush, short nap or foam roller. Rollers should be changed after 1 ½ hours of use.

#### DEX-COAT SMOOTH:

Apply at the rate of 200-250 square feet per gallon. Apply the second coat as soon as the first coat is dry to the touch. Two coats are recommended. It can also be applied using airless equipment.

#### DEX-COAT TEXTURED:

Work from the container, a paint tray or by pouring the coating on the surface to be coated. Work a small section at a time, and make the final pass with the roller in one direction to give an even texture and help eliminate lap marks. Under normal conditions, the surface will remain workable for 5-10 minutes.

Apply at the rate of 100 to 150 sq/ft per gallon. Two coats are recommended to yield 10 dry mils. Allow the first coat to dry to the touch before applying second coat. Apply the second coat in the opposite direction distributing the sand evenly. Applying two coats ensures an elastic coating that will flex with temperature variances.

**DEX-COAT TEXTURED** can be applied using a hopper gun (do not use airless equipment).

#### DRYING TIME: (@77°F and relative humidity of 50%)

Allow 2-4 hours between coats.

Allow 4-5 hours dry time for light foot traffic.

Allow 24 hours dry time for normal foot traffic.

Allow 5 days dry time before placing heavy objects on the surface.

Exterior applications must be protected from rain for at least 24 hours after application. High temperatures will shorten drying time, and conversely lower temperatures and high humidity will lengthen drying time.

#### WHEN NOT TO USE DEX-COAT

Do not apply over previously sealed surfaces.\*

Do not apply over poorly-bonded previous paint.\*\*

Do not apply if moisture in the substrate is higher than 15%.\*\*\*

Do not apply to a poorly cured or dusty concrete.\*\*\*\*

Do not apply to a surface exhibiting hydrostatic pressure.\*\*\*\*\*

Do not apply if surface temperature is over 90°F. or below 55°F.

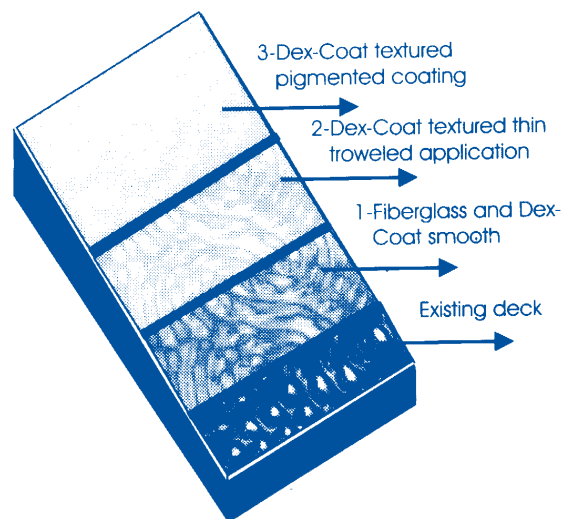
Read the entire technical bulletin and Application Instructions for Monochem Floor/Deck Coatings before proceeding with the application. The Application Instructions for Monochem Floor/Deck Coatings include necessary testing information to ensure a sound application.

Tests include: Absorption Test, Adhesion Test, Moisture Test, Concrete Test, and Hydrostatic Pressure Test.

## MONOCHEM DEX-COAT DECK RESTORATION SYSTEM

#### METHOD OF APPLICATION:

1. Apply **DEX-COAT SMOOTH CLEAR** (diluted 40-50% with water) and fiberglass matting to the existing deck surface. Allow 24 hours for drying before proceeding.
2. Apply a thin-trowelled application of **DEX-COAT TEXTURED** upon the dried fiberglass surface. **DEX-COAT TEXTURED** must be used without diluting with water. Allow thin-trowelled application to dry thoroughly before proceeding (1-2 hours, depending upon conditions.)
3. Apply **DEX-COAT TEXTURED** by using a pneumatic hopper gun equipped with a 1/8" orifice and a medium setting in the circular spray plate. The recommended air pressure for application is between 30-40 psi. Allow 5-10 minutes before knocking down the splattered texture with a steel trowel. Allow 1-2 hours for drying before proceeding.
4. Apply 1-2 coats of pigmented **DEX-COAT TEXTURED** or **SMOOTH**. Allow 2-4 hours between coats.



#### CLEAN-UP:

Wash all equipment and clothes with warm water and detergent. After a full cure, for dirt and common stains you can wash the surface using a mop with warm water and soap.

Thoroughly clean all tools with water immediately after use. Dried material on any tool surface or other surrounding surfaces will not easily be removed.

#### FIRST AID:

**Eye Contact:** Flush eyes with fresh water for at least 15 minutes. Call a physician. **Skin Contact:** Wash skin with soap and water. **Inhalation:** Get fresh air if affected by vapor or spray mist. **Ingestion:** Do not induce vomiting. Call a physician immediately.

#### STORAGE & SHELF LIFE:

Store in temperatures between 40°F - 90°F. **PROTECT FROM FREEZING.** One year shelf life in well protected, unopened original container.

**WARRANTY INFORMATION:** MONOPOLE believes that the information in this publication is an accurate description of the typical characteristics and/or uses of the product or products. It is your responsibility to thoroughly test the product in your specific application to determine its safety and performance capabilities. Since use of this product is beyond our control, MONOPOLE, INC. cannot assume any risk or liability for results obtained when not used according to our specifications and directions. Unless MONOPOLE provides a specifically written statement of fitness for a particular use, MONOPOLE'S sole warranty is that the product will meet its current sales specifications. MONOPOLE disclaims any other expressed or implied warranties, including the warranty of merchantability and fitness for use. Your exclusive remedy and MONOPOLE'S sole liability for breach of warranty is limited to a refund of the purchase price or replacement of any product proven to be defective. In no event shall the seller be liable for any loss of profits or other consequential damages, including labor charges.



### SURFACE PREPARATION:

**ALL SURFACES** must be clean and dry, free of any dirt, wax, grease, oils, curing agents, peeling or poorly bonded paints. Bleeding stains such as tannin acids and graffiti must be primed. Concrete and masonry must be allowed to cure for at least 28-days. Level protrusions, and repair cavities, voids and cracks.

### UNPAINTED SURFACES:

Dense concrete should be acid-etched with a solution of 1-part muriatic acid and 3-parts water. Some surfaces may require a second and third treatment to fully open the pores. Rinse well. Scrub and neutralize the surface with a solution of 1-pint household ammonia and 4-gallons water. Rinse and remove all excess acid before allowing concrete to dry. Properly etched concrete should feel like a 120-grit sandpaper.

### PREVIOUSLY PAINTED SURFACES:

Remove all peeling, loose and poorly bonded paints. Surface should be shotblasted with one to two passes or mechanically abraded with an 80-120 grit sandpaper and cleaned. Remove all chlorinated rubber and oil-based enamels, epoxy, urethanes or use **MONOCHEM 1** Epoxy Primer.

**WOOD** surfaces should be sanded. Smooth all rough areas and feather irregular edges. Seal knots and pitch pockets, fill nailholes and cracks. Redwood, Pine and Cedar contain tannin that may bleed and discolor the surface. An appropriate stain blocker/primer should be used before the application of the topcoat.

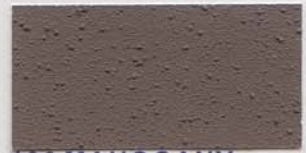
**METAL** surfaces, including galvanized, must be rust-free and cleaned with a solution of TSP. Rinse well. On some applications, the use of **MONOCHEM 1** Epoxy Primer is recommended.

**IMPORTANT NOTE:** Hydrostatic pressure is the term used to describe water migration below a concrete slab to the surface. It can be caused by high water tables, the absence of a protective membrane under the slab or a broken membrane. Hydrostatic pressure will cause paint bubbling as the water pushes the paint film away from the surface. Concrete floors exhibiting the symptoms of hydrostatic pressure should never be painted until the problem is corrected. The use of **MONOSEAL WHITE** (up to 13 psi) helps prevent problems associated with hydrostatic pressure.

## MONOPOLE STANDARD COLORS



104 ADOBE



106 MAHOGANY



137 FOREST



139 RUSTIC RED



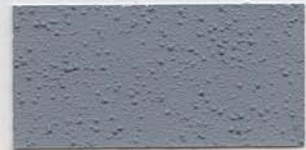
151 DESERT GOLD



153 SONORA TAN



161 DESERT GRAY



163 METAL GRAY

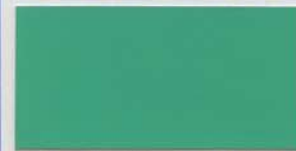


171 WHITE



173 BLACK

## OSHA SAFETY COLORS



202 SAFETY GREEN



204 SAFETY RED



206 SAFETY YELLOW



208 SAFETY BLUE

*Colors show approximate texture, depending on application technique. Colors are subject to normal industry variation.*