

## CIPADOR<sup>®</sup> E-100

*General Purpose Epoxy Floor Coating*

### DESCRIPTION

CIPADOR<sup>®</sup> E-100 is a 100% solids, high build general purpose two component epoxy coating with a moderate level of chemical resistance to most common mild acids and household chemicals.

### WHERE TO USE

CIPADOR<sup>®</sup> E-100 is recommended for use in areas with medium to heavy traffic and where there is the possibility of exposure to mild acids, alkali, and solvents. Hospitals, laboratories, locker rooms, washrooms, automotive showrooms, and pharmaceutical production areas, fire stations and any area where an aesthetically pleasing durable finish is required.

### CHEMICAL RESISTANCE - Cured Film

\*Note: Refer to Chemical Resistance Chart

### BENEFITS

- 100% solids, with no offensive odors, zero VOC's
- easy to apply
- good gloss and color retention
- excellent bond to concrete and steel
- good wear resistance
- excellent water spotting resistance
- approved by the Canadian Food Inspection Agency
- available in clear and a wide range of colors (see color chart)

### Handling Properties

Mix Ratio, by volume	..... 2 parts A: 1 part B
Viscosity (Mixed) @ 23°C (74°F)	..... 900 cps
Solids Content	..... 100 %
Mixed Weight (Density)	..... 1.2 kg/litre (10 lb./US gal)
Pot Life @ 23°C (74°F)	..... 30 minutes
Application Temperature	... 10°C- 30°C (50°F-86°F)
Thin Film Set Time @ 23°C (74°F)	..... 6 hours
Foot Traffic @ 23°C (74°F)	..... 16 hours
Vehicular Traffic @ 23°C (74°F)	..... 24 hours
Full Cure and Maximum Resistance	..... 7 days

### DATA - Cured Film

Tensile Elongation	..... 10% @ break
(ASTM D638-86)	
Tensile Strength	..... 20 Mpa (2900 psi)
(ASTM D638-86)	
Hardness (Shore D)	..... 80
(ASTM D2240-86)	
Impact Resistance	..... pass 160 in/Ib.
(ASTM D2794)	
Abrasion Resistance (ASTM D4060)	.... 90mg loss
Taber Abrasion, C-17 Wheel, 1000 cycles	

The above information is representative of actual production runs. Independent test results may vary from the above by approximately ±10%.

### APPLICATION

#### SURFACE PREPARATION

New concrete must be cured for a minimum of 28 days before applying CIPADOR<sup>®</sup> E-100. The substrate must be above 10°C (50°F) and must be free of all dirt, waxes, previously applied coatings, oil, grease, laitance and any foreign matter that may interfere with the bond of the coating to the substrate. Cracks and surface defects should be repaired prior to the application of coating. All concrete and steel surfaces to be coated should be shot blast or mechanically cleaned to provide a clean tooth for the coating. If acid etching is the method of choice for preparation of the concrete surface, the etched surface must be thoroughly flushed and dry prior to application of the coating. Prime with CIPADITE<sup>®</sup> Primer ST when the concrete substrate is dry or CIPADITE<sup>®</sup> Primer DS when the concrete substrate is damp. **NOTE: CIPADOR<sup>®</sup> E-100 Clear is a self prime product. Do not use CIPADITE<sup>®</sup> Primer ST or DS with CIPADOR<sup>®</sup> E-100 Clear.**

#### MIXING

The mixing equipment used to mix the coating must be clean and free of any contaminants that may be present in the equipment from previously used products. Mix component A first to eliminate the possibility of settlement. Pour all of the liquid from Part A and Part B into the mixing equipment. A 'Jiffy Mixer' or a mud

0960-06-1105

mixer blade on a slow speed drill is the preferred method of mixing. Mix the blended components for a **minimum** of 3 minutes.

### **APPLICATION**

Pour a workable amount of the mixed coating on to the prepared substrate and spread the material evenly with either a flat or notched squeegee. Using a lint free 5 mm nap roller, (designed for epoxy and urethane) back roll the applied material to provide an even coat. Care should be taken not to overroll the material as air may become entrapped in the coating. Two coats are recommended, one prime coat and one top coat. If a non-slip sanded surface is required, a properly graded, dry, contaminant free grit should be broadcast on the surface of the first coat following the final rolling. The grit coat must be top coated with a second coat. Apply the second coat in the same manner as the first. Allow to cure thoroughly before exposing to chemicals or continuous traffic.

### **LIMITATIONS**

Do not apply CIPADOR® E-100:

- if the substrate and ambient temperatures are below 10°C (50°F)
- do not apply to a damp surface (use CIPADITE® PRIMER DS)
- do not apply less than 8-10 mils as orange peel finish may appear due to insufficient material to self level.

### **COVERAGE**

Based on 10 mils thickness per coat:  
4 m<sup>2</sup>/litre (160 f<sup>2</sup>/U.S. gallon)

Note: A minimum of two coats are required. (One prime coat and one top coat)

### **PACKAGING**

CIPADOR® E-100 is packaged in:  
3.79 litre/1 U.S. gal. units  
11.4 litre/ 3 U.S. gal. units  
56.7 litre/15 U.S. gal. units

### **CLEAN UP**

Clean all equipment and installation tools immediately with CPD® Xylol or Sure Klean® Asphalt and Tar Remover. Read the M.S.D.S. for this product prior to use.

### **STORAGE**

Store in a heated warehouse. Do not freeze.

### **SHELF LIFE**

Three years from the date of manufacture if kept in original unopened containers under normal heated warehouse conditions.

### **SAFETY PRECAUTIONS**

Consult Material Safety Data Sheet (M.S.D.S.) for specific instructions. M.S.D.S. #271 & 271A (Colored), M.S.D.S. #271B & 271C (Clear).

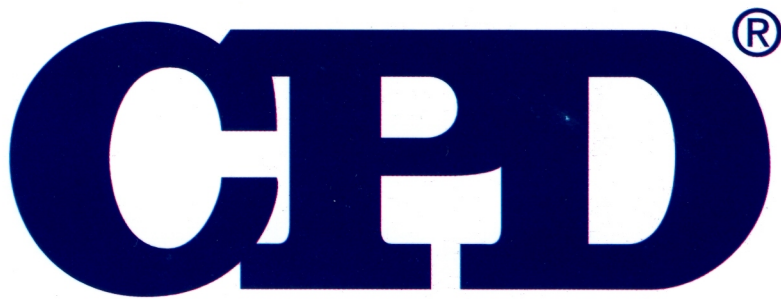
### **WARRANTY**

The recommendations made and the information herein is based on our own and independent laboratory experience, and is believed to be accurate under controlled conditions. However, no warranty or guarantee of accuracy is made because we cannot cover every possible application of product nor anticipate every variation encountered in weather conditions, job conditions, methods used and types of surfaces on which the product is applied. The users shall make their own tests to determine the suitability of such products for any particular purpose.

CPD® makes no warranties with respect to this product, expressed or implied, including, without limitation, the implied warranties of merchantability or fitness for a particular purpose.

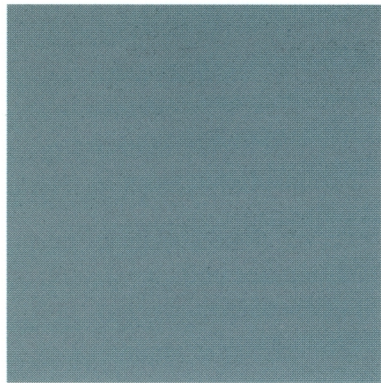
CPD®'s liability shall be limited in all events to supplying sufficient product to re-treat and/or repair the specific area to which the CPD® product has been applied. CPD® reserves the right to have the true cause of any difficulty determined by accepted test methods. CPD® shall have no other liability, including liability for incidental, consequential or resultant damages, however caused, whether due to breach of warranty, negligence, or strict liability.

THIS WARRANTY MAY NOT BE MODIFIED OR EXTENDED BY REPRESENTATIVES OF CPD®, ITS DISTRIBUTORS OR DEALERS.



**Construction Products**

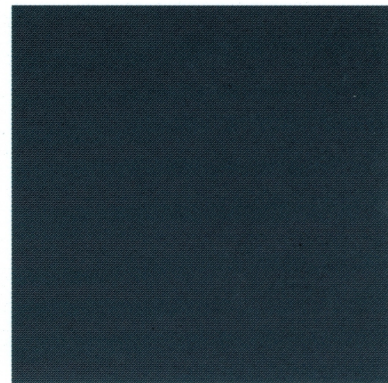
## **EPOXY COATING COLOR CHART**



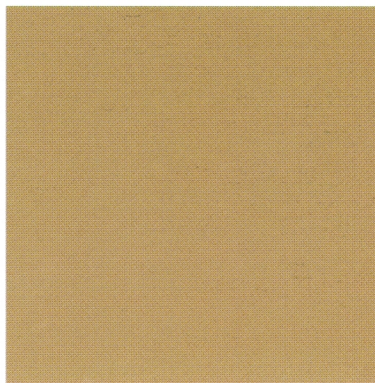
Pebble Grey



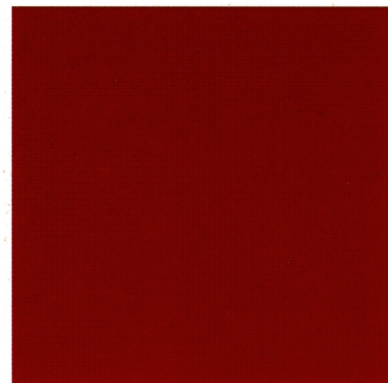
Storm Grey



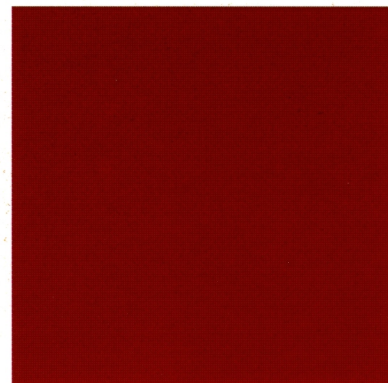
French Grey



Off White



Tan



Tile Red

### ***Custom Colors Available***

\*Premium charges for all customized colors.

The colors shown are as accurate as printing methods will permit.

Colors may vary from resin to resin or texture of coating.

All colors may not be available for every product.



0960-16-0501





**Artista Concrete**





Lions Gate Concrete





**Gearup Construction**





Caliber Construction