

BEAUTYCRETE CONCRETE RELEASE AGENT

Note: Color selections on this chart approximate as closely as possible the appearance of the coloured release agent. Variations can be expected due to job conditions, finishing techniques, use of sealers and slight raw material color drifts.

Clear Liquid also Available



Black



Super Black



Light Grey



Medium Grey



Neutral



Charcoal Grey



Blue Grey



New Blue 2000



Green Grey



Dark Green



New Desert Tan



Light Brown



Medium Brown



Dark Brown



Beige



Beige Cream



Buff



New Buff



Pewter



Pink



Plum



Sandstone



Sliver



Taupe



Terra Cotta



Tile Red



Brick Red



Granite Red



Redwood



White

CONCRETECH CONCRETE RELEASE AGENT

Note: Color selections on this chart approximate as closely as possible the appearance of the coloured release agent. Variations can be expected due to job conditions, finishing techniques, use of sealers and slight raw material color drifts.



Peanut Butter - RA01



Peach - RA02



Adobe - RA03



Gun Metal Green - RA04



Vanilla - RA05



Cabaret Tile - RA06



Monterey Magic - RA07



Brick Red - RA08



Farmhouse Red - RA09



Baja Red - RA10



Forest Green - RA11



Desert Tan - RA12



Frappuccino - RA13



Coffee & Cream - RA14



Arizona Sunrise - RA15



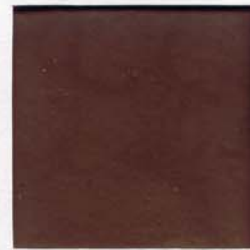
Autumn Brown - RA16



Terracotta - RA17



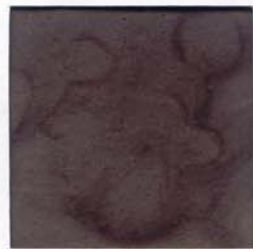
Driftwood - RA18



Hot Chocolate - RA19



Black Coffee - RA20



Plum Pudding - RA21



Lilith Charcoal - RA22



Sun Gray - RA23



French Gray - RA24



Military Gray - RA25



White - RA26



Smokey Blue - RA27



Black - RA28



Stone Mauve - RA29



Sand Stone - RA30



Perma-Cast® Antiquing Release Color

Perma-Cast® Antiquing Release is dusted over the surface of freshly colored concrete flatwork before using a pattern stamping tool. The release agent prevents the tool from sticking to the newly colored, freshly stamped concrete. As the tool is stamped into the concrete, the colored release powder is pressed in the textured surfaces of the concrete.

Upon washing and sealing, the difference in color between the underlying concrete and the release, creates a visually attractive, antiqued look to the concrete. The added color gives the appearance of depth.

The amount of release agent imparted will vary with job site conditions. The final results will range between the color of the base concrete and that of the antiquing release.

The surface must be sealed and maintained to preserve its antiqued appearance over time.



R23 Smoke



R12 Storm Gray



R13 Deep Charcoal



R11 Gray Plum



R28 Slate Gray



R26 Cape Cod Gray



R32 Bone



R24 French Cream



R29 Wheat



R22 Arena Buff



R25 Colina Tan



R14 Walnut



R19 Russet



R15 Brick Red

Many things can affect the appearance of color. For best color matching results, a representative job-site sample should be cast using materials from the project location.

Colors shown on this chart represent formulations using medium gray cement. Variations can be expected due to differences in cement, aggregates and method of application.

