



CONCRETE STAIN

Seals and Protects!



Enliven New Concrete, or Rejuvenate Old, with Rich Durable Color!

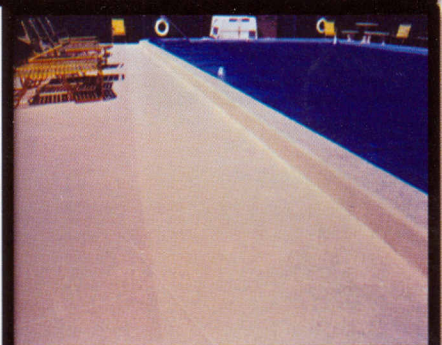
- Seals and Protects.
- Restores & Beautifies.
- Provides Durable, Long-Lasting Color.
- Available in 30 Standard Colors.
- Easy to Clean, Stain & Mildew Resistant.
- Excellent Wet & Dry Abrasion Protection.
- Cool-to-Touch.
- Won't Peel, Chip, Crack, or Fade.



DEEP PENETRATING!



Concrete Stain is specially formulated to penetrate deep and seal the surface for long lasting, durable color.



Decorative Concrete Technology



CONCRETE STAIN SEALER

PRODUCT NAME

CONCRETE STAIN SEALER

MANUFACTURER & DISTRIBUTOR
OF INDUSTRIAL CHEMICALS
1611 GUNN HIGHWAY
ODESSA, FLORIDA 33556
(813) 886-8811

PRODUCT DESCRIPTION

A solvent-based concrete stain formulated with acrylic resins designed for deep penetration.

BENEFITS

Increte Systems CONCRETE STAIN SEALER is resistant to salt spray, acids, alkali, water, ultraviolet rays, and wet or dry abrasion. The specially formulated resin system has a very high resistance to traffic, and the aromatic and aliphatic solvents incorporated into our system provide excellent penetration, flow and cure characteristics. Pigment system is alkali-proof and lightfast, so color will not fade or dieback prematurely.

RECOMMENDED USES

- Increte Stamped Concrete System, all concrete surfaces
- Driveways, Spray-Deck, Kool Deck or Keystone
- Tennis Courts (Concrete Only)
- Shuffleboard Courts
- Swimming Pool Coating
- Properly-prepared Steel Surfaces.
- As a Water Proof, Sun Proof,
- Decorative Top Coating for Masonry
- Roofs and Walls.

NON-RECOMMENDED

Do not use on wood surfaces. Do not use on areas sensitive to solvent attack. Do not use on wet surfaces.

APPLICATION PROCESS

Test areas should always be used when unfamiliar with surface and/or product. This extra step will determine if the surface is properly prepared, probable coverage, and the best method suited for application

Preparation: Concrete must be at least 14 days old. All paint, oil, and grease must be removed. Concrete must be etched as a porous surface is required. Etching should be done with 5 part water to 1 part Increte Systems Muratic Acid Solution. Extremely hard or polished concrete may require a second application with stronger solution. Rinse surface thoroughly with plenty of clean water and let dry completely. Ambient and substrate temperature must be between 50°F and 90°F. Avoid application during rainy, foggy, or very humid weather when water condensation forms on the surface.

Roller Application: *Always stir stain well before use, and during application to prevent settling and ensure proper dispersion of colorant.* Roll on first coat. Use a solvent-resistant (phenolic core) roller applying stain not to exceed 150 ft² per gallon. To help eliminate bubbling, saturate roller thoroughly before starting and use a roller pan or a paint grid to remove excess stain. A second coat must be applied at full strength after the first coat has completely dried, usually a minimum of 1-2 hours.

Spray Application: *Always stir stain well before use, and during application to prevent settling and ensure proper dispersion of colorant.* Apply first coat. Use an airless sprayer with a medium tip size and very low pressure. If conditions are windy or extremely hot, adjust technique to avoid "dry spraying" the surface. A second coat must be sprayed after the first coat is dry.

MAINTENANCE

High resistance to water, alkali, and abrasion results in a surface that is lightly scrubbed with soap/detergent and water on a regular basis. Rinse after cleaning

PACKAGING

1 gallon, 5 gallon pail, 55 gallon drum.

COLOR

CONCRETE STAIN SEALER is available in 30 standard colors and is available in custom colors at an additional cost.

AVAILABILITY

Available through distributors or contact manufacturer.

TECHNICAL INFORMATION

Specific Gravity:	0.95-1.1
Non-volatile (wt):	35-40%
Viscosity (#2 Zahn)	22-25sec
Wetherometer G23F Type:	2000+hrs.
Moisture Vapor Permeability:	0.001
Hurricane Force Water:	No Effect
Abrasion Resistance:	12.5 g. loss
Toukon Hardness:	12 (KHN)
Glass Transition Temperature:	50°C
Flash Point:	65°F
Coverage:	150ft ² /gl

ACID & ALKALI

RESISTANCE TEST

Each sample was allowed to react for 24 hours under a watch glass, washed with water, allowed to recover for 30 minutes then observed:

Alkali	
2% NaOH	Slight Dulling
5% Tide	No Effect
2% Ivory	No Effect
ACID	
5% Citric Acid	No Effect
Urine	No Effect
Milk (Lactic Acid)	Slight
	Discoloration
5% HCl	Slight
	Discoloration
5% Phosphoric Acid	No Effect
Mustard	Slight Stain
Ketchup	No Effect

APPLICABLE STANDARDS

Meets or exceeds applicable Federal Standard TT-C555B, HUD approved, ASTM 96-66, ASTM G23F, Federal Standard 141.

SAFETY PRECAUTIONS

FLAMMABLE: Keep away from heat, sparks, and open flame. Ventilate area, do not let vapors accumulate. Material can be irritating to eyes and skin. In case of contact, flood affected area with water. See a Physician if irritation persists.

Avoid prolong breathing of vapors. Use approved organic vapor mask when TLV is exceeded.

KEEP AWAY FROM CHILDREN.

WARRANTY

All recommendations, statements and technical data contained herein based on tests we believe to be reliable and correct, but accuracy and completeness of said tests are not guaranteed and are not to be construed as a warranty, either expressed or implied. User shall rely on his own information and tests to determine suitability of the product for the intended use and user assumes all risk and liability resulting from his use of the product of this manufacturer which proves to be defective. Neither seller nor manufacturer shall be liable to the buyer or any third person having any injury, loss or damage directly or indirectly resulting from use of or inability to use the product.

Recommendations or statements other than those contained in written agreement signed by an officer of the manufacturer shall not be binding upon the manufacturer or seller.

IMPORTANT NOTICE

THESE PRODUCTS ARE SOLD SUBJECT ONLY TO THE EXPRESSED WARRANTIES CONTAINED HEREIN. ADDITIONAL WARRANTIES, EXPRESSED OR IMPLIED, AND ANY WARRANTY OF MERCHANT ABILITY IS HEREBY EXCLUDED. BUYER AGREES THAT SELLER ASSUMES NO LIABILITY FOR CONSEQUENTIAL DAMAGES OF ANY KIND, WHICH RESULT FROM THE USE OR MISUSE OF THE MERCHANDISE SOLD HEREUNDER. IN THE EVENT THAT THE BUYER PROVES THAT ANY GOODS RECEIVED DO NOT CONFORM TO THE SPECIFICATIONS AGREED TO BETWEEN THE PARTIES OR IF THE BUYER PROVES THAT SUCH GOODS WERE DEFECTIVELY MANUFACTURED. THE BUYER'S REMEDIES SHALL BE LIMITED TO EITHER THE RETURN OF THE GOODS AND REPAYMENT OF THE PURCHASE PRICE OR REPLACEMENT OF THE NON-CONFORMING GOODS AT THE OPTION OF THE SELLER. SUCH REMEDY BEING EXCLUSIVE OF ALL OTHERS AND THE SOLE REMEDY AVAILABLE TO THE BUYER, HEREBY EXPRESSLY WAIVES ANY CLAIM TO ADDITIONAL DAMAGES.



ACRYLIC LATEX CONCRETE STAIN

PRODUCT NAME

**CONCRETE STAIN
ACRYLIC LATEX**

MANUFACTURER & DISTRIBUTOR
OF INDUSTRIAL CHEMICALS
1611 GUNN HIGHWAY
ODESSA, FLORIDA 33556
(813) 886-8811

PRODUCT DESCRIPTION

ACRYLIC LATEX CONCRETE STAIN is a water-based concrete stain sealer designed to beautify, protect and seal any concrete and masonry surface. It is a blend of the finest acrylic resins and pigments available which gives this product superior adhesion, good resistance to wet and dry abrasion, excellent color fastness, outstanding resistance to chemicals and excellent blush resistance.

Preparation: Before application of any new coating, dirt, grease, grime, any foreign materials should be removed with a caustic degreaser such as **Increte System's GREASE-A-WAY** and all exterior surfaces should be treated for mildew. It is imperative to etch concrete properly, especially very smooth and dense concrete.

Application: Mix product thoroughly. Apply with brush, roller, or spray. Apply when surface temperatures are at least 50°F. Mask off baseboards and walls. Paint a 3" border around the edge while working. Begin at the corner farthest from the door. Saturate the roller with stain and lay it out in bold, criss-cross strokes, then make straight even strokes to smooth out the stain film. Roll into freshly brushed borders. Bring roller down lightly over wet stain in smooth even strokes. Work from dry area into wet areas in 3 feet sections. Do not thin with paint thinners. Do not allow water to stand on newly stained surface for one week.

FINISH: Medium to High Gloss
VEHICLE TYPE: Acrylic Resins
PIGMENT TYPE: Titanium Dioxide & Inert Pigments

SOLVENT TYPE: Water
FLASH POINT: Not Flammable

TECHNICAL DATA
VOC less than 100 g/L

NOTES

Clean tools and equipment with soap and water. Store and maintain spray equipment as directed by the manufacturer.

This type of a finish could become slippery when wet or when oil or grease is on the surface. In areas where this could be a problem, Shur-Grip or Ultra-Grip, skid resistant additives should be either mixed into or broadcast on to the finish before it is allowed to dry for added traction.

PACKAGING

1 gallon can, 5 gallon pail

% Solids (Volume) 35±1

% Solids (Weight) 45±1

Recommended Dry Film

(Per Coat): 1-2 mil

Dry Time @ 75°F. 1 to 2 hr to touch

Recoat in 4-6 hours

Flammability Non Flammable

SAFETY

No special protection required. Use normal industrial protection equipment when handling material. In case of spill, absorb with inert material and dispose of in accordance with application regulations.

RECOMMENDED THINNER

INCRETE ACRYLIC LATEX CONCRETE STAIN does not require thinning,

SURFACE PREPARATION

New, unpainted, or smoothly worn concrete should be etched with a solution of 1 part muriatic acid to 5 parts water. Let stand 30 minutes. Scrub surface with a brush or stiff broom while rinsing to remove all residue. Let dry. Apply 2 coats of **INCRETE ACRYLIC LATEX CONCRETE STAIN**.

RECOMMENDED USES

For interior and exterior surfaces such as patios, floors, porches, walks, or wherever an outstanding abrasion resistant coating is desired. Can be used on floors of garages, carports, driveways, or other areas where automobiles will stand. This stain is resistant to hot tire pickup and can be used on all uncoated or unsealed surfaces, either horizontal or vertical.

APPLICATION

Brush, Roll, or Spray. A 3/8" nap roller is recommended on smooth surfaces, a 1/2" to 1" nap is recommended for rough surfaces. For spraying, use a tip designed for application of bodied paints or contact a representative from Increte Systems.

RESISTANCE TO

Dry Heat	Excellent
Alkali	Excellent
Yellowing	Excellent
Weather	Excellent
Moisture	Excellent
Industrial Fumes	Very Good
Mildew	Excellent
Brake Fluid	Excellent
Transmission Fluid	Excellent
Hot Tire Pick Up	
Resistance	Excellent

COVERAGE

Coverage will depend on porosity and contour of the surface to be coated. One gallon of this coating should cover 275 square feet at a dry film thickness of 2 mils on non porous surfaces.

WARRANTY

All recommendations, statements and technical data contained herein based on tests we believe to be reliable and correct, but accuracy and completeness of said tests are not guaranteed and are not to be construed as a warranty, either expressed or implied. User shall rely on his own information and tests to determine suitability of the product for the intended use and user assumes all risk and liability resulting from his use of the product of this manufacturer which proves to be defective. Neither seller nor manufacturer shall be liable to the buyer or any third person having any injury, loss or damage directly or indirectly resulting from use of or inability to use the product. Recommendations or statements other than those contained in written agreement signed by an officer of the manufacturer shall not be binding upon the manufacturer or seller.

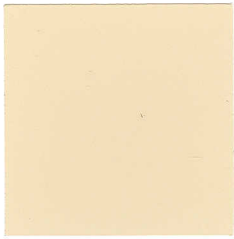
IMPORTANT NOTICE

THESE PRODUCTS ARE SOLD SUBJECT ONLY TO THE EXPRESSED WARRANTIES CONTAINED HEREIN. ADDITIONAL WARRANTIES, EXPRESSED OR IMPLIED, AND ANY WARRANTY OF MERCHANTABILITY IS HEREBY EXCLUDED. BUYER AGREES THAT SELLER ASSUMES NO LIABILITY FOR CONSEQUENTIAL DAMAGES OF ANY KIND WHICH RESULT FROM THE USE OR MISUSE OF THE MERCHANDISE SOLD HEREUNDER. IN THE EVENT THAT THE BUYER PROVES THAT ANY GOODS RECEIVED DO NOT CONFORM TO THE SPECIFICATIONS AGREED TO BETWEEN THE PARTIES OR IF THE BUYER PROVES THAT SUCH GOODS WERE DEFECTIVELY MANUFACTURED. THE BUYER'S REMEDIES SHALL BE LIMITED TO EITHER THE RETURN OF THE GOODS AND REPAYMENT OF THE PURCHASE PRICE OR REPLACEMENT OF THE NON-CONFORMING GOODS AT THE OPTION OF THE SELLER. SUCH REMEDY BEING EXCLUSIVE OF ALL OTHERS AND THE SOLE REMEDY AVAILABLE TO THE BUYER, HEREBY EXPRESSLY WAIVES ANY CLAIM TO ADDITIONAL DAMAGES.

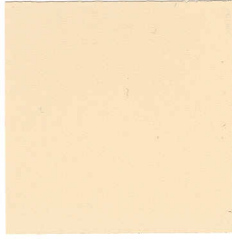


Increte® Systems Colors

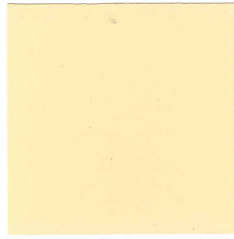
Standard Colors for the Concrete Industry



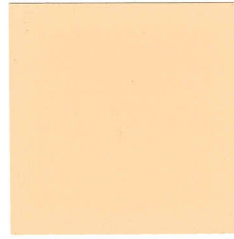
KOOL WHITE



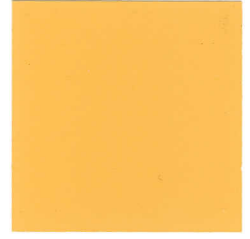
ADOBE BUFF



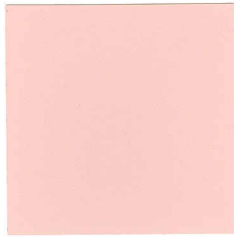
HARVEST SAND



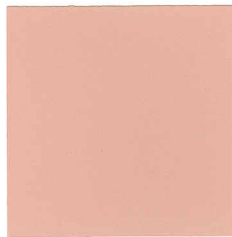
PEACH



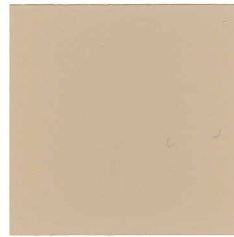
SAFETY YELLOW



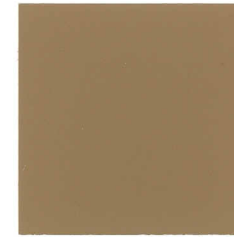
MISTY MAUVE



CORAL



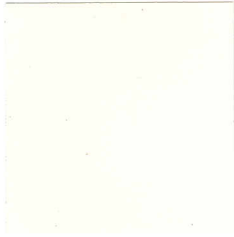
SUN BUFF



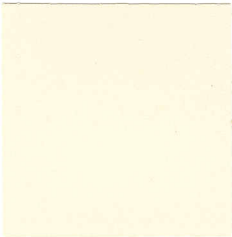
SAND BUFF



DESERT TAN



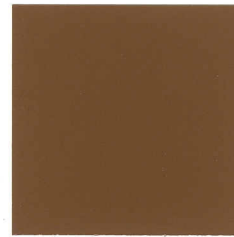
WHITE



ANTIQUE WHITE



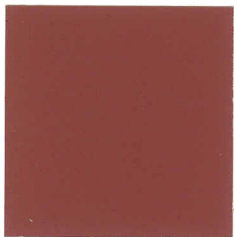
MAPLEWOOD



AUTUMN BROWN



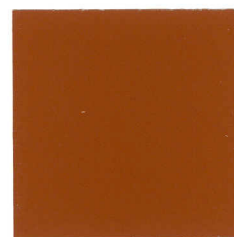
RUST BROWN



PLUM



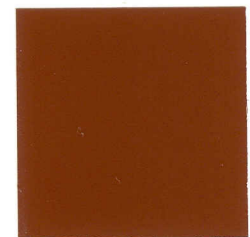
BRICK RED



TERRA COTTA



TILE RED



REDWOOD



SABAL



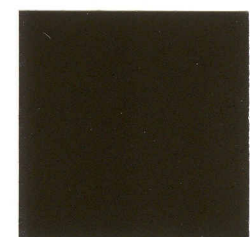
PEWTER



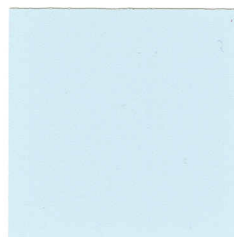
SUN GRAY



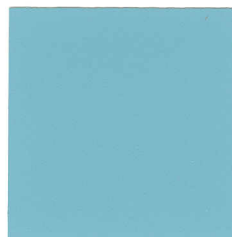
GRAY



CHARCOAL



SKY BLUE



TEAL



SEAFOAM GREEN



SLATE



PHILLY BLUE

NOTE: Colors shown are represented as close as possible. Upon installation, variations can be expected due to differences in cement, aggregates and method of application.